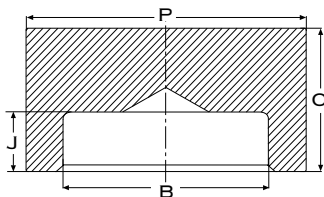


TAPPO FEMMINA S.W.

ANSI B 16.11
3000 - 6000 LBS

CAPS S.W.

ANSI B 16.11
3000 - 6000 LBS



Diam. nominale Nominal pipe size	3000				6000			
	O ⁽¹⁾		P ⁽¹⁾		O ⁽¹⁾		P ⁽¹⁾	
	mm	inches	mm	inches	mm	inches	mm	inches
1/4"	20	0.59	22	0.87	17.5	0.69	23.1	0.91
3/8"	20	0.67	26	1.02	19.1	0.75	26.7	1.05
1/2"	20	0.75	32	1.26	22	0.87	34	1.34
3/4"	25	0.91	38	1.50	26	1.02	41	1.61
1"	26	1.02	45	1.77	28	1.10	50	1.97
1 1/4"	30	1.10	55	2.17	30	1.18	58	2.28
1 1/2"	31	1.18	60	2.56	32	1.26	66.5	2.62
2"	38	1.42	75	2.95	38	1.50	85	3.35
2 1/2"	41	1.50	95	3.62	42	1.65	100	3.94
3"	43	1.65	110	4.33	45	1.77	120	4.72
4"	48	1.89	140	5.51	51	2.01	150	5.91

⁽¹⁾ Le dimensioni non elencate nell'ANSI B 16.11-1980 e BS 3799-1974 possono variare a seconda del produttore.
Dimensions not listed in ANSI B 16.11-1980 and BS 3799-1974 may vary according to the manufacturer.