

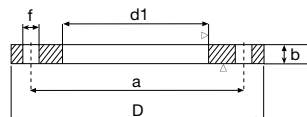
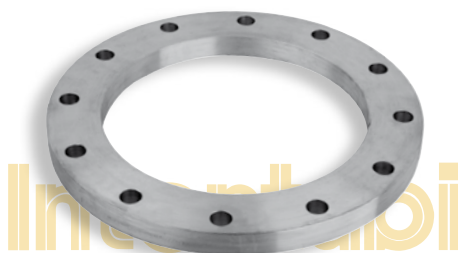
FLANGE PIANE DA SALDARE FORGIATE

EN 1092-1 TIPO 01/A PN 10

FORGED WELDING PLATE FLANGES

EN 1092-1 TYPE 01/A PN 10

STAINLESS STEEL AND CARBON STEEL



DN	D	d ₁	b	Fori			Peso Kg Weight Kg
				a	f	N° fori / Holes	
Da DN15 a DN50 dimensioni identiche con PN40 / From DN15 to DN50 dimensions identical with PN40							
Da DN65 a DN150 dimensioni identiche con PN16 / From DN65 to DN150 dimensions identical with PN16							
200	340	221,5	24	295	22	8	10,30
250	395	276,5	26	350	22	12	14,00
300	445	327,5	26	400	22	12	15,50
350	505	359,5	30	460	22	16	23,00
400	565	411,0	32	515	26	16	29,00
450	615	462,0	36	565	26	20	35,00
500	670	513,5	38	620	26	20	42,00
600	780	616,5	42	725	30	20	54,00
700	895	-	50	840	30	24	66,00
800	1.015	-	56	950	33	24	90,00
900	1.115	-	62	1.050	33	28	103,00
1.000	1.230	-	70	1.160	36	28	131,00